

**LEFT-RIGHT ANTERIOR CEREBRAL ARTERIES ANASTOMOSIS AND
“EXTRA ANTERIOR CEREBRAL ARTERIES”**
*ANASTOMOSE ESQUERDA-DIREITA DAS ARTÉRIAS CEREBRAIS ANTERIORES E
“ARTÉRIAS CEREBRAIS ANTERIORES EXTRAS”*

Aristeu de Almeida Camargo Neto¹, David Gonçalves Nordon¹, Rodrigo Rejtman Guimarães¹, Orlando Fermozele Rodrigues Júnior²

Arterial malformations of the brain arteries are not uncommon. In one of our autopsies, we have identified an interesting alteration: a left-right anastomosis occurring in the anterior cerebral arteries, one centimeter ahead of the anterior communicating artery. As the left frontal lobe would be insufficiently supplied due to such a malformation, extra branches have grown: an “extra anterior cerebral artery” originated from the anterior communicating artery and generated

three branches which were involved in the frontal lobes' blood supply, especially the left one.

Acknowledgements

We are grateful for Mr. Claudio Theodoro and Mr. Marcos Antonio Bego, autopsy technicians who have been helping us throughout our work.

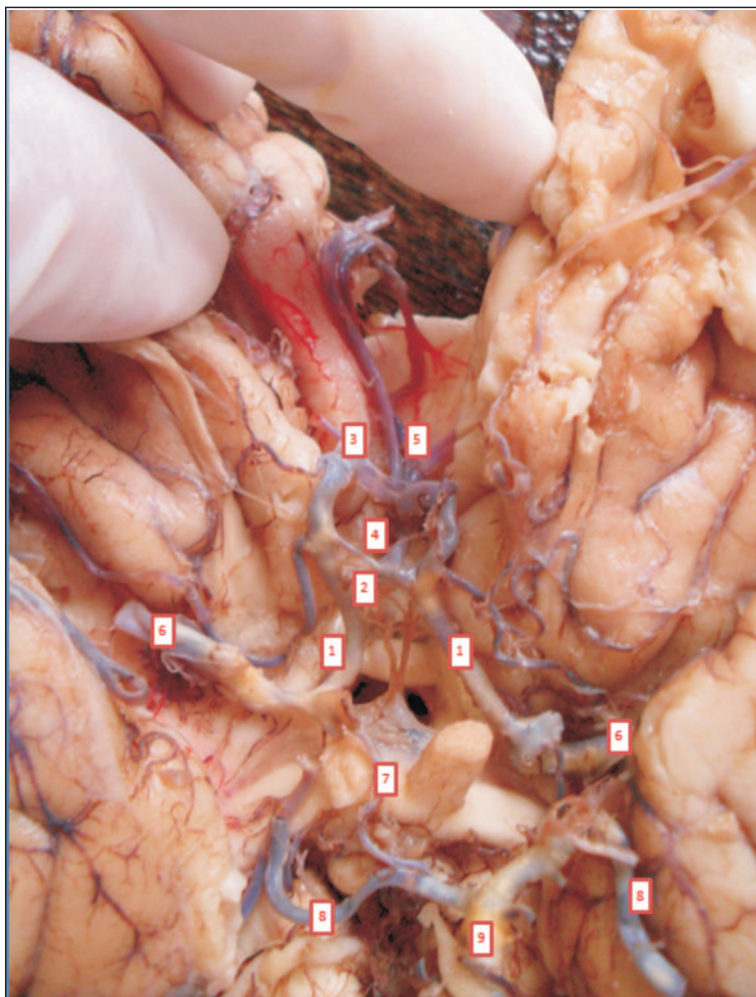


Figure. Inferior view of the encephalon. 1 -Anterior cerebral arteries (proximal segment); 2- Anterior communicating artery; 3 - Left anterior cerebral artery anastomosed to the right artery; 4-Additional branch from the “extra anterior cerebral artery” originated from the anterior communicating artery; 5- Branches from the “extra anterior cerebral artery” supplying both frontal lobes, especially the left one; 6 - Medium cerebral arteries (cut); 7 - Right posterior communicating artery; 8 - Posterior cerebral arteries (cut); 9 -Basilar artery.

Rev. Fac. Ciênc. Méd. Sorocaba, v. 13, n. 2, p. 30, 2011

1. Acadêmico do curso de Medicina - FCMS/PUC-SP

2. Professor do Depto. de Morfologia e Patologia - FCMS/PUC-SP

Recebido em 11/2/2011. Aceito para publicação em 16/2/2011.

Contato: aristeuneto87@hotmail.com